

WARRIOR

By Winnebago Industries



Drive a Tough Bargain!

The exciting new 25 foot Winnebago Warrior gives you world-famous Winnebago Industries quality in a Class A motor home— at a very affordable price.

You get a great floor plan, solid Winnebago Industries construction, excellent towing capability and a bedroom!

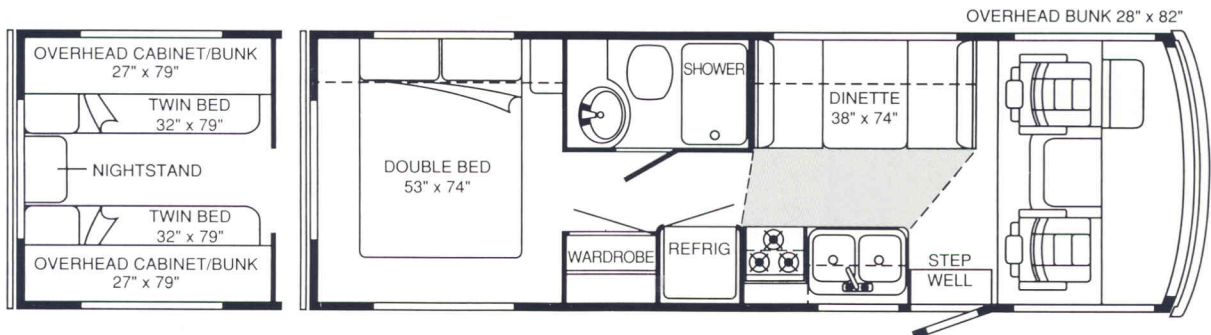
You can have your choice of bedroom with walk-around double bed or twin beds. Overhead bunks on the twin-bed option give even more sleeping capacity.

But even with all of this, the 25 foot Winnebago Warrior is one of the lowest priced Class A motor homes on the market today. The suggested retail price is below that of many luxury automobiles! Low monthly payments make the Warrior even more affordable. And the Warrior may qualify for second home tax advantages, making all interest tax deductible.



A rear bedroom with full size walk around bed is a primary feature of the Winnebago Warrior 25RU. There are also an efficient galley, comfortable dinette, side bath and spacious closets.

SPECIFICATIONS:	25RU
Length	25' 4"
Exterior Height w/Roof Air	10' 4"
Exterior Width	8'
Interior Height	6' 5.7"
Interior Width	7' 7"
Fuel Capacity	40 gals.
Fresh Water Capacity w/Heater	36 gals.
Holding Tank Capacity	38 gals.
LP Capacity	42 lbs.
Furnace	19,000 BTU
GVWR	11,800 lbs.
Wheelbase	158.5"



Warrior 25RU



The roomy interior of the Winnebago Warrior features both a couch and dinette that convert into sleeping areas— and there's also a pull-down front bunk. The Warrior has an efficient galley, hand-crafted cabinetry, abundant storage and stain resistant fabric and carpet.

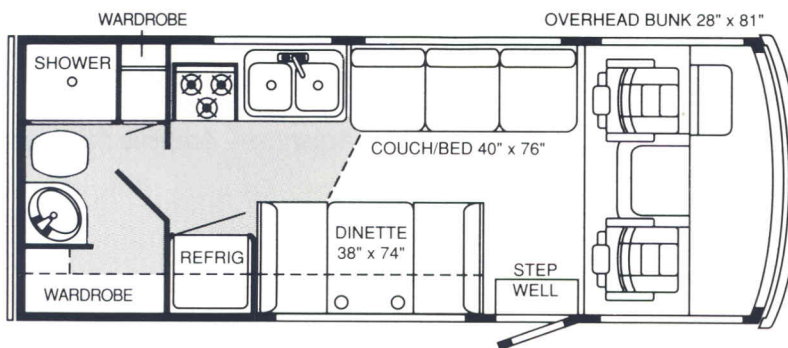
Just a Little Gives You a Lot

The 22 foot Warrior's suggested retail price is less than most luxury automobiles. And do we need to mention the very affordable monthly payments and possible second-home tax advantages again?

But affordability doesn't mean compromising quality. The Winnebago Warrior is manufactured by Winnebago Industries— the number one name in motor home excellence. You get solid steel substructure, exclusive Thermo-Panel sidewalls and backwall, extensive product testing and quality control Winnebago Industries is famous for.

There's also a well-planned, spacious, tasteful interior featuring Scotchgard[™] protection on all fabrics. The couch/bed, convertible dinette and pull-down overhead bunk provide abundant sleeping capacity.

The 22 foot Warrior also offers excellent towing capabilities— and all sorts of opportunities for just plain traveling fun! Whether it's a weekend outing or an extended vacation, the 22-foot Winnebago Warrior provides motorhoming excitement that's designed to last many years down the road— at a very affordable price!



Warrior 22RB

SPECIFICATIONS:	22RB
Length	21' 11"
Exterior Height w/Roof Air	10' 4"
Exterior Width	8'
Interior Height	6' 5.7"
Interior Width	7' 7"
Fuel Capacity	40 gals.
Fresh Water Capacity w/Heater	36 gals.
Holding Tank Capacity	38 gals.
LP Capacity	42 lbs.
Furnace	17,000 BTU
GVWR	11,800 lbs.
Wheelbase	137"

Look What **Warrior's** Got For You!

STANDARD FEATURES

DECOR SELECTIONS:

Blue
Teal
Brown
Eggplant

AUTOMOTIVE FEATURES:

Chevrolet Chassis: 7.4L
Gasoline Engine
Automatic Transmission
w/Overdrive and Cooler
105 Amp Alternator
Deep Cycle Marine/RV 630 CCA
Battery
Dual Battery Charge Control

DRIVER CONVENIENCES:

Automotive Heating/Air Conditioning: Flow Control System
Cab Windows: Full Sliding
w/Screen
Intermittent Windshield Wipers
Front Wraparound Curtain
w/Track
Power Assist Steering w/Tilt
Wheel
Seats: All Fabric, Arm Rests,
Swivel/Slide, Pedestal
Sunvisors
Cruise Control
Analog Cluster Display

SYSTEMS:

Six Gallon LP Water Heater
A/C Roof Mount Wire Path
AC/DC Load Center/Converter
Unit: DC Automotive-style
Fuses, AC Circuit Breakers, 9
Amp Battery Charger, 32 Amp
Converter
30 Amp. Power Cord
Demand Water Pump

SAFETY FEATURES:

LPG Leak Detector/Alarm
Smoke Detector/Alarm
10 BC Fire Extinguisher
Ground Fault Interrupter

INTERIOR FEATURES:

Main Entrance Door w/Screen
Latch and Lock Assembly
w/Deadbolt
Stain Resistant Carpet w/Pad
Assist Strap
Roof Vent: Bath and Galley
Ceiling Lights
Wardrobe w/Wooden Clothes
Rod

GALLEY FEATURES:

Dual Control Faucet
Stainless Steel Double Sink
w/Countertop Cover
Single Door Refrigerator/Freezer
Monitor Panel: Battery Condition
Gauge, Holding Tank Level
3-Burner Range Top
Vented Range Hood w/Light
Access to Storage Below Dinette
Seats

BATHROOM FEATURES:

Dual Control Faucet
Large, Ledge-back Oval Sink
Shower, Dual Control w/Flexible
Head
Shower Curtain
Lavatory Cabinet
Wood Medicine Cabinet
Marine Toilet
Tissue Holder
Towel Bar

EXTERIOR FEATURES:

Retractable Entrance Step
Awning Rail
Front Bumper: Painted Alumi-
num w/End Caps
Hinged Single Panel Hood
Tinted Window
City Water Hook Up
Gravity Tank Fill
Sewer Hose Storage In Rear
Bumper
Molded Storage Compartments

WARRANTY:

The basic warranty period is 12 months or 15,000 miles (24,135 kilometers) on the odometer, whichever occurs first. Preferred Care 24-Hour Road Service available. (See dealer for details)

OPTIONAL EQUIPMENT

Radial Tires (mandatory option)
13,500 BTU Roof A/C
4,000 Watt Generator
Canadian Code
Undercoating
**PREFERRED
EQUIPMENT PACKAGE:**
Class II Trailer Hitch
Wheel Covers
Exterior Ladder
Single Front Bunk
AM/FM Stereo w/Cassette
Microwave Oven
Vinyl Floor Covering
Auxiliary Start Circuit
TV Antenna— Amplified System

See your dealer for availability of special options.

Winnebago Industries' continuing program of product improvement makes specifications, equipment, model availability and prices subject to change without notice.



 Built Proudly By Winnebago Industries

© 1992 Winnebago Industries, Inc. Forest City, Iowa 50436
Printed in the U.S.A.