

Winnebago Minnie Winnie



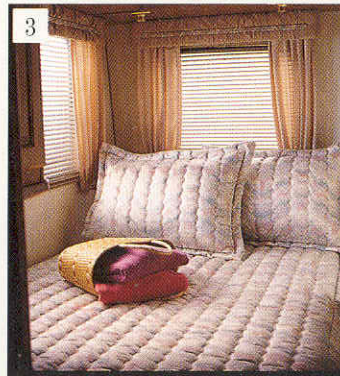
Minnie Winnie. The Most Popular Way To Go.

It's no wonder Minnie Winnie is the most popular motor home in its class.

It has all the room and features of a larger motor home. Because it's a Winnebago, it has construction features the competition can't match. And its exterior is as handsome as it is rugged. Inside and out, it is clear to see how this motor home has earned such a great reputation.

And the joy of owning a Minnie Winnie lasts long after the purchase. Minnie Winnie is supported by an outstanding nationwide dealer network. And come resale time, Minnie Winnie is tops at retaining its value.

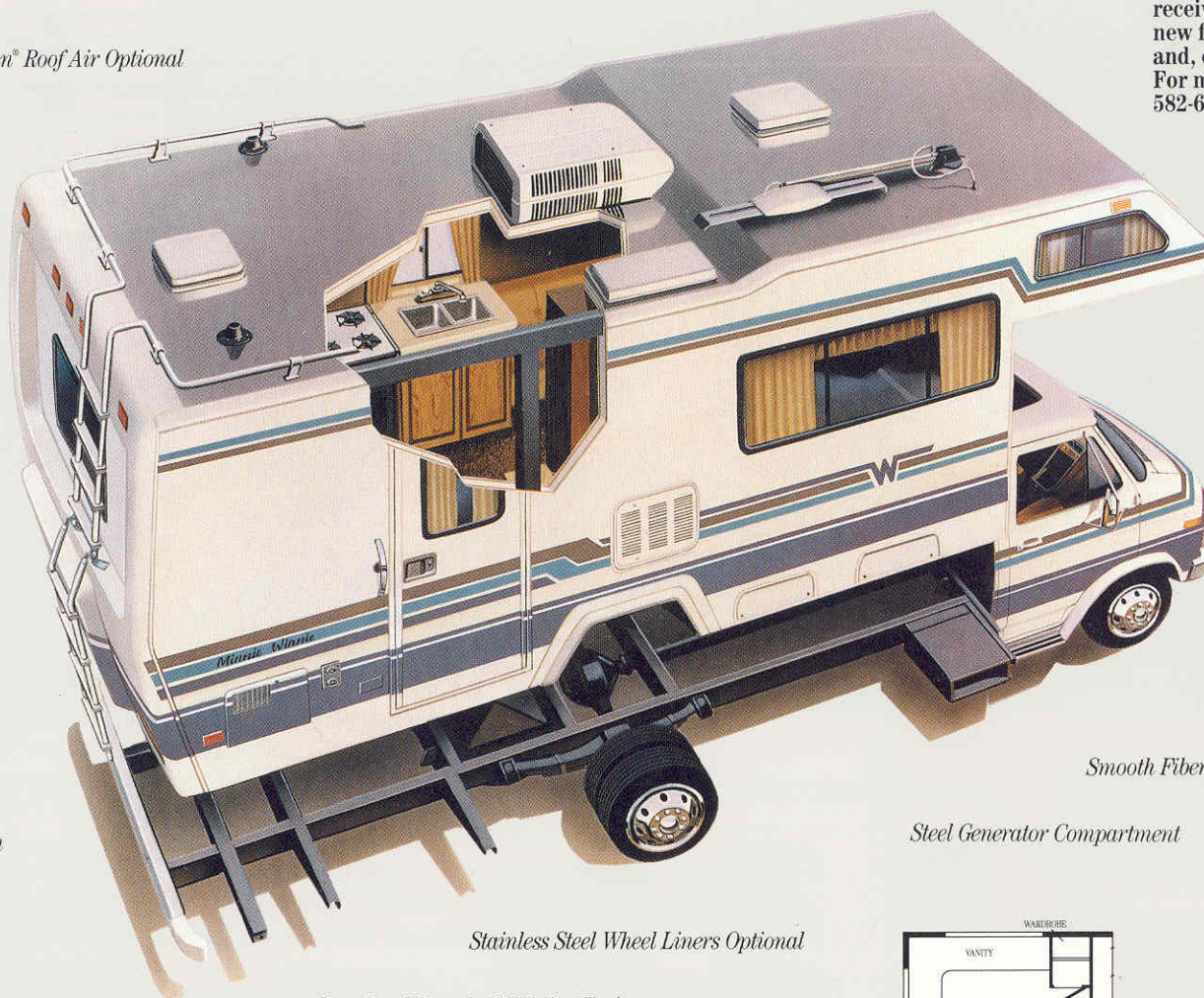
Experience the quality that has made this Winnebago the leader. Test drive a Minnie Winnie®.



1. Minnie Winnie's interior has Stitchcraft furniture and oak cabinet doors. A large 54" x 76" cabover bunk is not pictured.
2. The galley features a 4-burner range, 3-way refrigerator, systems monitor panel and optional microwave/browning oven.
3. In the bedroom, you'll enjoy a Sealy® mattress beneath you and generous storage overhead.
4. The brass-tone fixtures, shower door and oak-door cabinetry add up to a luxury bath.
5. The single-piece rear cap covers an insulated inner wall and a locking spare tire compartment with storage space.

Every Winnebago owner is invited to join the Winnebago-Itasca Travelers (W.I.T.) Club. Members enjoy rallies and caravans, receive special discounts and services, make new friends and renew old acquaintances, and, of course, have the time of their lives. For more information, call W.I.T. at (515) 582-6874.

Coleman® Roof Air Optional



Every Minnie Winnie Is Subjected To An Extensive Exterior Water Leak Test.

Flush-Mounted Refrigerator And Stove Vents

Tinted Coach Windows

Attractive Color Coordinated Graphics

LP Leak Detector And Tester

Ground Fault Interrupter, Fire Extinguisher And Smoke Detector

Fiberglass Rear Cap

Luggage Rack And Ladder Optional

Meets Or Exceeds All Applicable State And Federal Safety Standards

Computer Aided Design Helps Ensure Proper Balance And Weight Distribution

Solid Oak Cabinet Doors

U.L. Approved LP Regulator

Front And Rear Mud Flaps

Extended Roof Design For Extra Headroom In Coach

Stain Resistant Upholstery Fabrics And Carpeting

Non-Hardening Sealant Throughout

Chrome Front And Rear Bumpers

Bolted Steel Tie-Downs For Appliances And Holding Tanks

Sealed Aluminum Underflooring Resists Corrosion

Critical Steel Parts Are Primed And Rustproofed

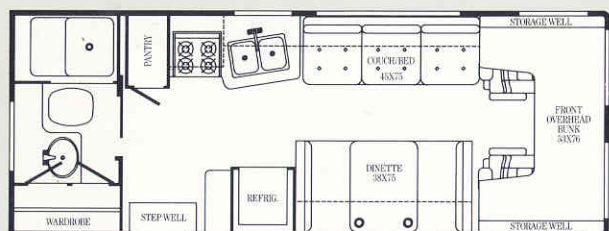
Smooth Fiberglass Skin

Steel Generator Compartment

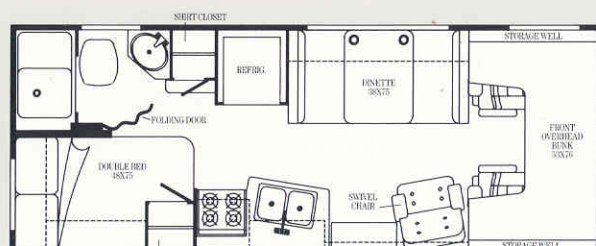
Stainless Steel Wheel Liners Optional

Seamless Water And Holding Tanks

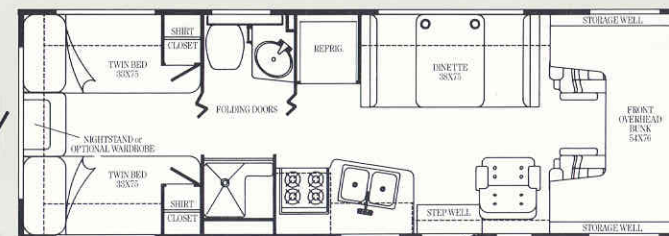
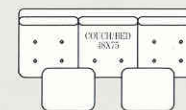
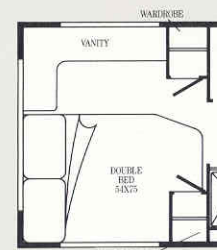
Entrance Door Deadbolt Lock



424RB



424RC



426RT

Note: Dimensions shown are for sleeping space only and dashed lines denote overhead storage area.

SPECIFICATIONS	24RB	24RC	26RT
Length (Chev./Ford)	24'1"/24'7"	23'5"/24'7"	NA/26'7"
Exterior Height w/Roof Air (Chev./Ford)	9'8"/10'0"	9'8"/10'0"	NA/10'0"
Exterior Width	8'0"	8'0"	8'0"
Interior Height (Max.)	6'5"	6'5"	6'5"
V-8 Engine (CID Chev./Ford)	350/351 or 460	350/351 or 460	NA/351 or 460
Battery CCA (Chev./Ford)	525/635	525/635	NA/635
Alternator Amps. (Chev./Ford)	85/100	85/100	NA/100
Fuel Capacity (Gal. Chev./Ford)	33/38	33/38	NA/38
Fresh Water Capacity (Gal. w/Heater)	41	42	36
Holding Tank Capacity (Gal.) Toilet, Lav./Shower, Galley	35/35	35/35	28/37
LP Capacity (Lbs.)	80	80	68
Sleeping Capacity (STD/OPT)	5/5	5/5	5/5
GVWR (Lbs. Chev./Ford)	10,500/11,000	10,500/11,000	NA/11,000
Wheelbase (Chev./Ford)	146"/158"	146"/158"	NA/176"

VARIABLE FEATURES	24RB	24RC	26RT
2nd Deep Cycle Marine/ RV Battery	STD	STD	NA
Reading Lights	STD	STD	NA
Shower Skylight	NA	NA	STD
Flip-Up Galley Extension	NA	STD	STD
Make-Up Lights	NA	NA	STD
Shower Light	STD	STD	NA
Wardrobe Mirror	NA	STD	NA
Entrance Door Cabinet	NA	STD	STD
Room Dividers	NA	STD	STD
Electronic Ignition Furnace (BTUs STD/OPT)	24,000/34,000	24,000/34,000	30,000/NA

STANDARD FEATURES*

AUTOMOTIVE: 3-Speed Automatic Transmission w/Cooler; Coil Spring Front Suspension, 2-Stage Multi-Leaf Rear Suspension, (6) 8.0 X 16.5D Tires (Chev.), 100-Amp. Alternator (Ford), 85-Amp. Alternator (Chev.), Emergency Start Solenoid, Automotive Air Conditioning, Power Steering, Tilt Steering Wheel, Cruise Control, Intermittent Wipers, Inside Rearview Mirror, Blackout Curtain, Front Wraparound Curtain, Deluxe Bucket Seats (Swivel/Slide, Reclining, Armrests), Battery Gauge, Cigarette Lighter, Ashtray, Sunvisors, Pre-Wired for Radio and Speakers, 2 Cab Speakers, Dome Light, Floor Mats, Beverage Tray, Bunk/Transition Panel Trim, Cab Carpeting.

APPLIANCES/SAFETY: 4-Burner Range w/Glass Door Oven, Powered Range Hood w/Deluxe Monitor Panel, Double Door Refrigerator/Freezer, Double Stainless Steel Sink

w/Butcher Block Cover and Faucet, 6-Gal. Electronic Ignition Water Heater, Direct Drive Water Pump, 5-B:C Fire Extinguisher, Smoke Detector, Ground Fault Interrupter, LP Leak Detector, LP Leak Alarm.

INTERIOR: Carpeting w/Pad, Coach Vent, Front Overhead Bunk Drapery Panels and Tiebacks, Galley Area Mini-Blind w/Padded Valance, Spice Rack, Fluorescent Galley Lighting, Magazine Rack, Wastebasket, Lounge/Dining Area Mini-Blinds w/Padded Valances Side Panels and Tiebacks, Entrance Door Curtain w/Tieback, Brass-Tone Bathroom Faucet, Wood Framed Medicine Cabinet, Bath Mirror, Bathroom Light, Powered Lavatory Vent, Marine Toilet, Shower w/Flexible Shower Head, Shower Door, Removable Clothes Rod in Shower, Bath Area Mini-Blind w/Valance, Brass-Tone Towel Bar and Ring, Brass-Tone Tissue Holder, Entry Assist Strap, Carpeted Wardrobe Shelf, Wardrobe Light.

EXTERIOR: Chrome Bumpers, Tinted Windows, Deep Cycle Marine/RV Battery, 32-Amp. Converter/9-Amp. Battery Charger, Rearview Mirrors, Dual-Locking Storage Doors, Lockable Water and Fuel Fill Doors, Pre-wiring for Roof Air, Entrance Screen Door, Retracting Entrance Door Step, 110-Volt Outlet, Porch Light, Assist Handle, Mud Flaps, Sewer Hose and Storage, LP Tank, Tire Tools, Extensive Warranty (Complete details of warranty terms and conditions are available at any Winnebago dealer).

OPTIONAL FEATURES*:

Ford 351 or 460 CID V-8 w/(7) Radial Tires, Stabilizer Shocks, Water Purification System, Electronic Tune AM/FM/Cassette Stereo w/2 Speakers, AM/FM/Cassette Stereo w/Electronic Seek and Scan Tuner and Digital Clock, Decorator Kit, Microwave/Browning Oven w/Range Top and Ovenware Drawer, Microwave/Browning Oven, Large Double-Door Refrigerator (424RB only), Power Galley Roof Vent, 4,000-Watt Generator, Generator Prep. Kit, 13,500-BTU Roof Air, Motoraid and Rear Automotive Heater, TV Antenna w/Two Jacks and Cable Ready, Luggage Rack and Ladder, Rear Window Wiper (426RT only), Running Boards/Fender Flares, Step Plates, Spare Tire (Chev.), (7) Radial Tires (Chev.), Wheel Covers, Stainless Steel Wheel Liners, Undercoating, Trailer Towing Package (NA 426RT), Color Options: Blue, Cocoa or Mauve.

*Not all standard features or options are available on all models. See your dealer for the availability of specific options.

Winnebago's continuing program of product improvement makes specifications, equipment, model availability and prices subject to change without notice. Some items shown may be extra cost options.

©1988 Winnebago Industries, Inc. Forest City, Iowa 50436.

3337W11889

Printed in the U.S.A.

For Winnebago Sales and Service, contact:

WINNEBAGO
The number one selling brand.

If you are in the Forest City area, be sure to take the free Winnebago Industries factory tour. For more information call 1-515-582-6936.